

Building Family/Resident Engagement in Alberta

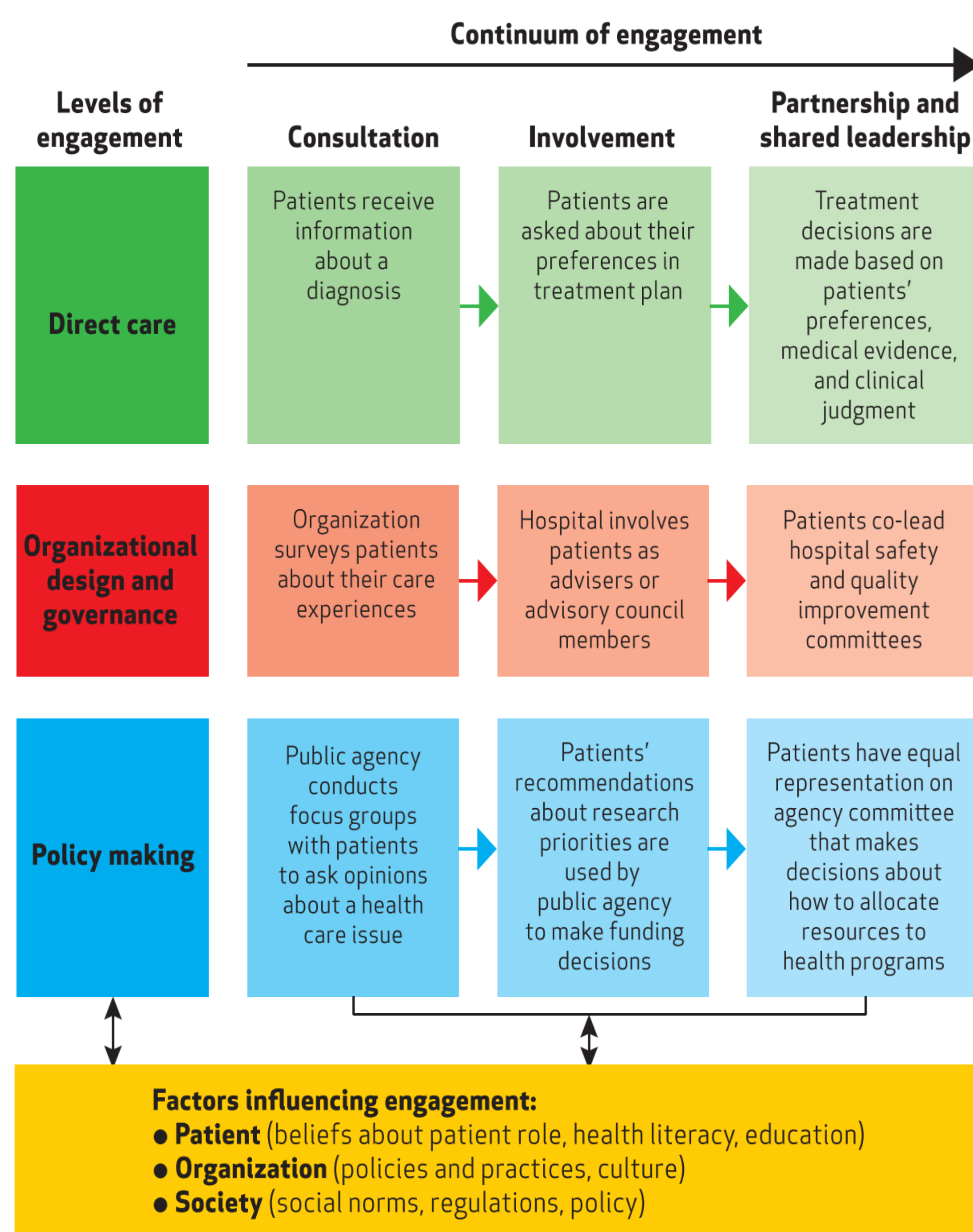
Sandra Woodhead Lyons, Institute for Continuing Care Education & Research (ICCER); Emily Dymchuk, ICCER;
Steven Friesen, Bethany Care Society

Contact: sandra@iccer.ca; emily@iccer.ca; steven.friesen@bethany seniors.com

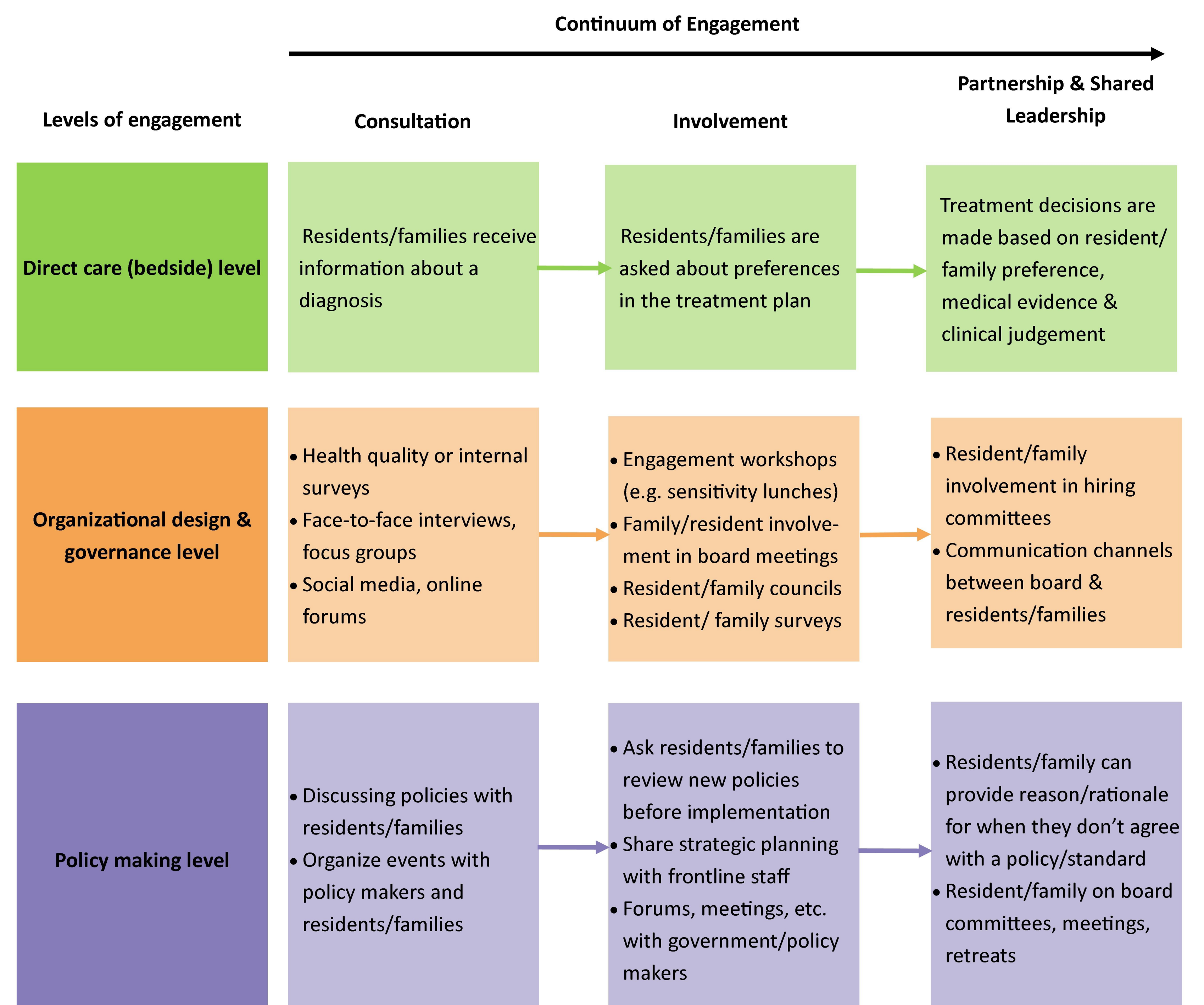
The Need for Family/Resident Engagement in Continuing Care in Alberta

- National and provincial health care standards
 - ⇒ Accreditation Canada
 - ⇒ Continuing Care Health Standards effective January 2016 (revised June 2018)
- Provincial legislation
 - ⇒ Resident and Family Councils Act (enacted 2018)

Basis for an Engagement Model ¹



ICCER Engagement Model for Continuing Care



1 Carman KL, Dardess P, Maurer M, Sofaer S, et al. Patient And Family Engagement: A Framework For Understanding The Elements And Developing Interventions And Policies. Health Affairs Vol. 32, No.2.